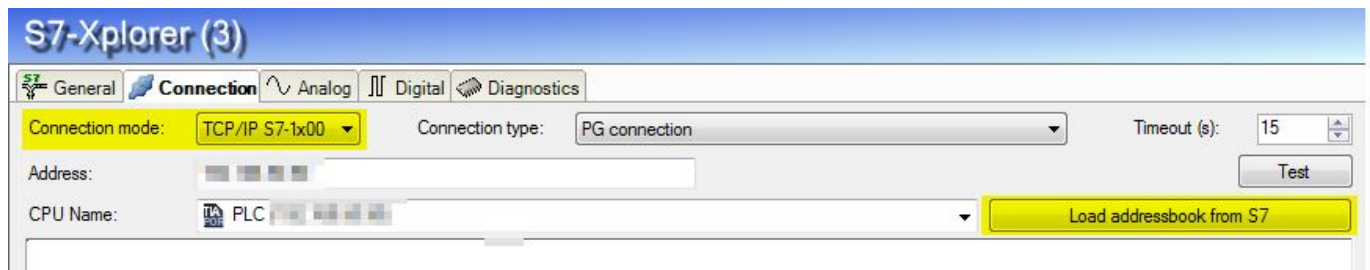


Address books for S7 CPUs

Starting with ibaPDA V6.37.3 S7-Xplorer and Request-S7 modules support loading address books directly from S7-1200 and S7-1500 series CPUs.

Here is some more information:

1. When using connection mode TCP/IP S7-1x00 you can load the address book information directly from the CPU with the button „Load addressbook from S7“.
You do NOT need the S7 project file(s) for that!
2. Like before you can still generate address books from offline projects. This method supports STEP7 V5.x and TIA portal V13, V14 and V15 projects.
3. You cannot load address books directly from S7-300 and S7-400 series CPUs because the symbols are not stored on the CPU.



Unique solution ID: #1175
Author: Steffen Falter
Last update: 2018-12-13 11:24