

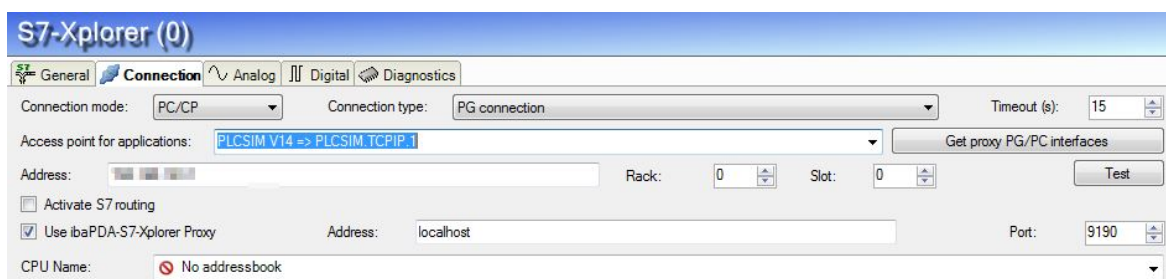
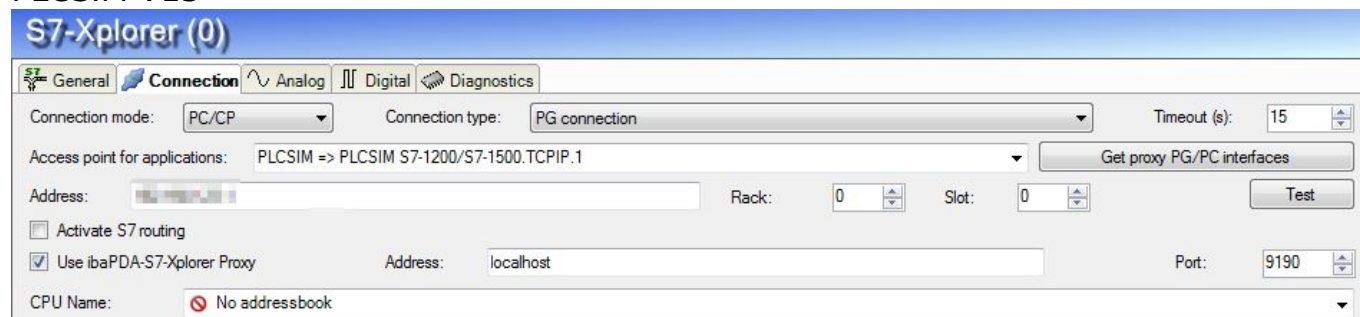
Does ibaPDA-S7-Analyzer / ibaPDA-PLC-Xplorer / ibaPDA-Interface-S7-Xplorer work with PLCSIM?

Yes, for details on setting up the communication please consult the current versions of the appropriate product manuals.

Setting up PLCSIM communication on Windows Vista or newer operating systems requires installation of the ibaPDA component ibaPDA-S7-Xplorer-Proxy.

You can also access PLCSIM V13 and PLCSIM V14. You must use connection mode "PC/CP", the configuration will look as follows (two images because the access point is named differently in the two versions):

PLCSIM V13



PLCSIM V14

In the [download area](#) you can download the manuals of the above-mentioned products (login required as a registered user):
ibaPDA-Interface-S7-Xplorer (section 3.4.16.2)
ibaPDA-PLC-Xplorer (section 8.4.13.2)

Unique solution ID: #1116
Author: Holger Benkhart
Last update: 2018-12-13 11:25