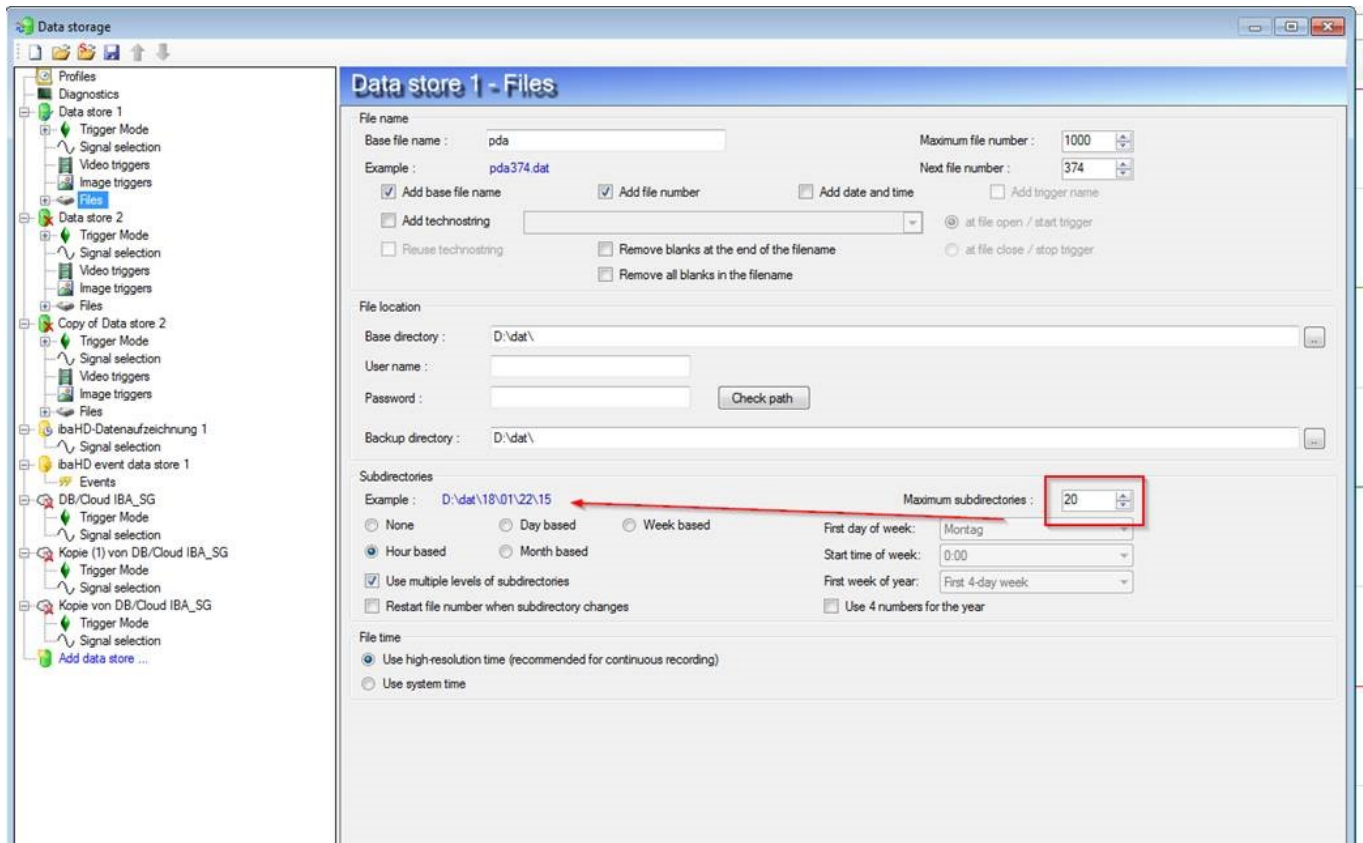


How is the max subdirectories handled when using multi-level sub-directories?

The setting of the maximum subdirectories refers only to the lowest level of the subdirectories.

The screenshot below serves as an example:

This setting only refers to the hour-directories. The hour-directories in all day-directories are counted. So only the last 20 hours are counted.



Unique solution ID: #1277

Author: Ulrike Stangl

Last update: 2020-01-30 13:45